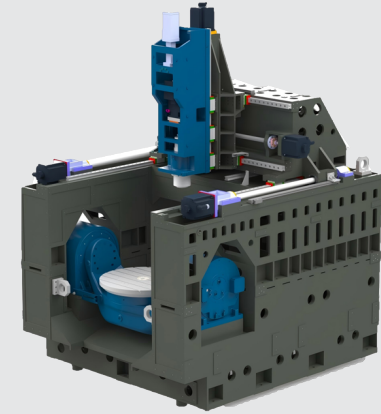


## 5 Axis CNC Machining Center Model CMC 800u



Item	Unit	CMC-320B	CMC-400B	CMC-630B	CMC-800U
Table diameter	mm	Φ350	Φ400	Φ630	Φ800
Left and right travel(X)	mm	500	600	700	850
Front and back travel(Y)	mm	500	600	700	1000
Up and down travel(Z)	mm	400	500	500	600
Table rotary angle A axis	degree	+120°~-120°	+120°~-120°	+120°~-120°	+120°~-120°
Table tilt angle C axis	degree	0~360°	0~360°	0~360°	0~360°
Spindle nose to worktable	mm	120-520	120-620	120-620	180-780
Spindle taper		BBT40	BBT40	BBT40	HSK-A63
Spindle speed	rpm	12000	12000	12000	20000
Tool Magazine Capacity	pcs	40 tools	40 tools	40 tools	60 tools
Max loading capacity	kg	100	200	850	1200
Main motor power	kw	11/15	200	11/15	30
Feeding speed(X/Y/Z)	mm/min	1-10000	1-10000	1-10000	1-36000
Fast moving speed(X/Y/Z)	m/min	36/36/36	36/36/36	36/36/36	36/20/36
X,Y,Z axis positioning accuracy	mm	0.008	0.008	0.008	0.008
X,Y,Z axis repeat positioning accuracy	mm	0.005	0.005	0.005	0.005
A/C axis positioning accuracy	Arc/Sec	A:±5 / C: ± 5	A:±5 / C: ± 5	A:±5 / C: ± 5	A:±5 / C: ± 5
A/C axis repeat positioning accuracy	Arc/Sec	A:4 / C: 4	A:4 / C: 4	A:4 / C: 4	A:4 / C: 4
Feed motor torque	Nm	28/28/28	3/3/3	3/3/3	4.29+4.29
Net weight of machine	T	5.2	6.5	11500	16500